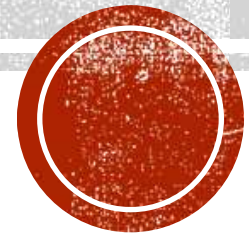


HOW WAS THAT MADE?

Project 1 – Round coffee table



DESIGN CHOICES

- Width governed by glass circle
- Style chosen after looking at web images of commercial tables
- Timber for legs, shelf and apron already in stock



COMPONENT PARTS

- Table top
- Apron
- Shelf
- Legs



TABLE TOP

- Size governed by glass circle
- Made from 140mm wide Jarrah
- 8 segments = 22.5 degree ends
- Length calculated, last piece cut to measure
- Biscuit jointed
- “ears” cut to allow clamping



THE IDEA FOR CLAMPING EARS

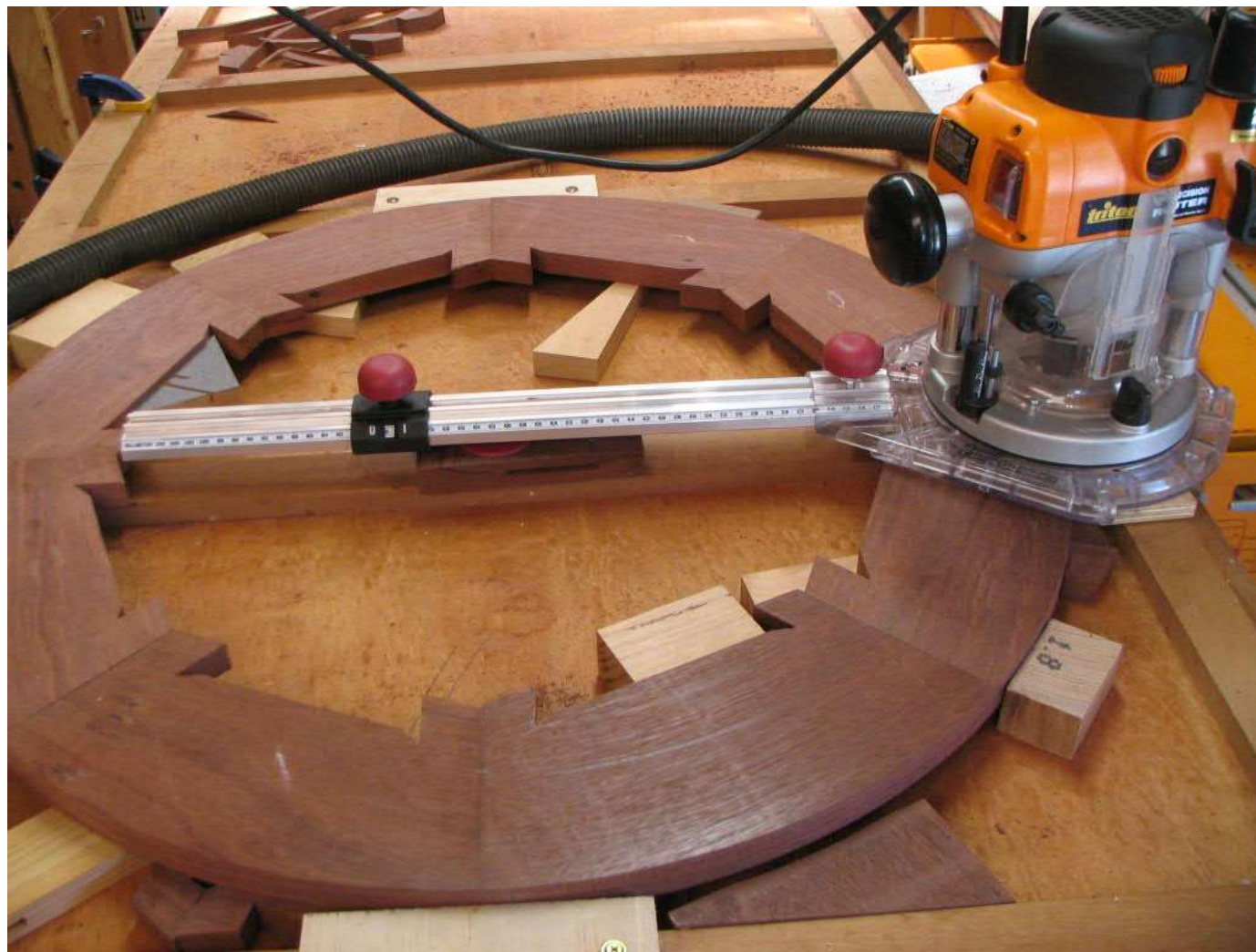


TABLETOP (CONT.)

- Inner and outer circles routed
- Rebate routed for glass insert
- Design feature added



ROUTING THE CIRCLES



SKIRT

- Detailed instructions for semicircular table in Tables book



APRON

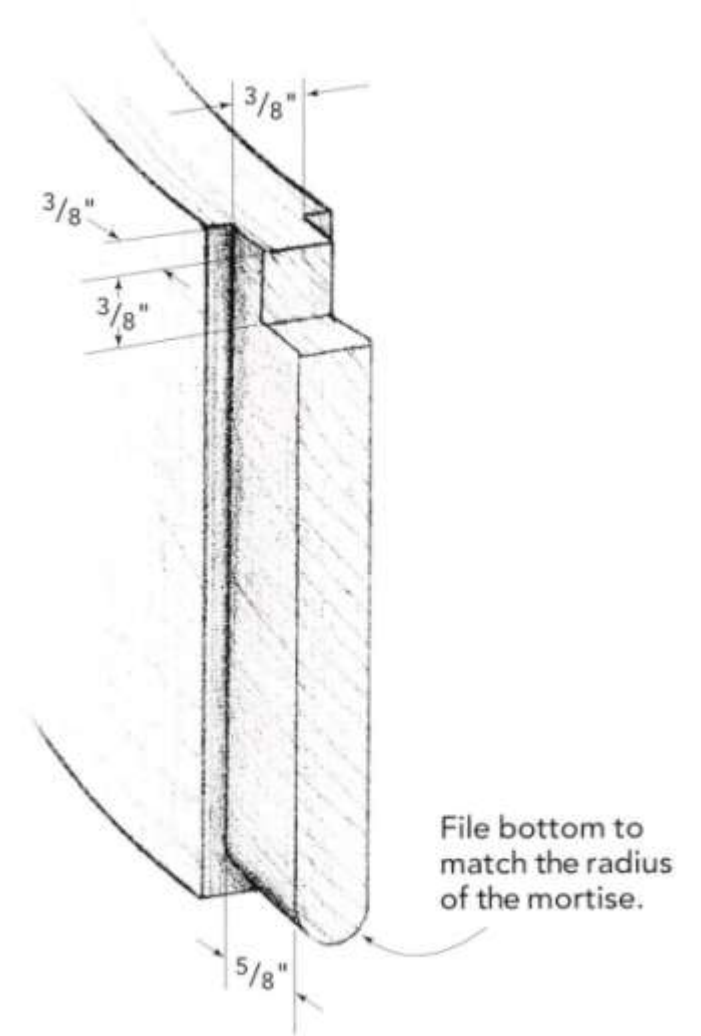
- Vic Ash cut into thin strips on bandsaw, cleaned up in thicknesser, then laminated between forms
- Form radiuses designed to match intended apron shape



APRON

- Haunched tenons cut on ends of apron quadrants

APRON TENON DETAIL



LEGS

- bottom tapers cut with taper jig
- mortises routed on both sides of tops to match haunched tenons
- cutouts and dowels for shelf



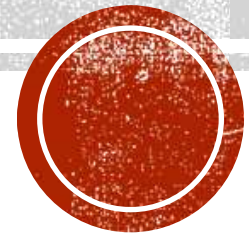
SHELF

- Jarrah veneered mdf board
- Circle cut with bandsaw jig
- Iron-on jarrah edge veneer



HOW WAS THAT MADE?

Project 2 – Treasures/jewelry box

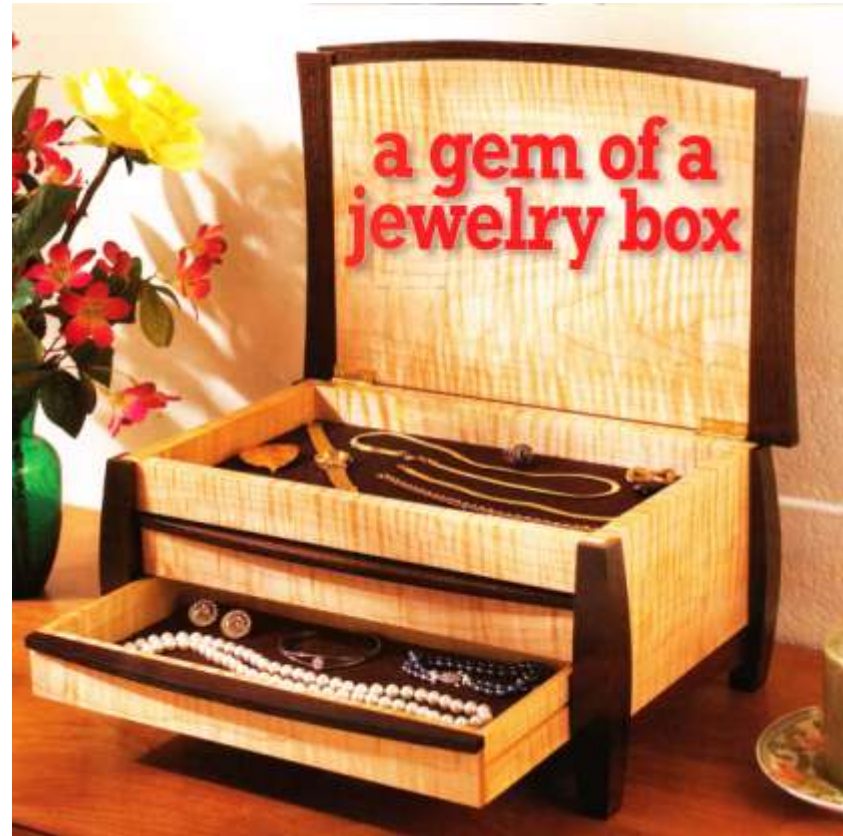


JEWELRY BOX



JEWELRY BOX

- Copied from October 2005 Wood Magazine
- Only timbers were changed: Jacaranda and Sydney Blue Gum

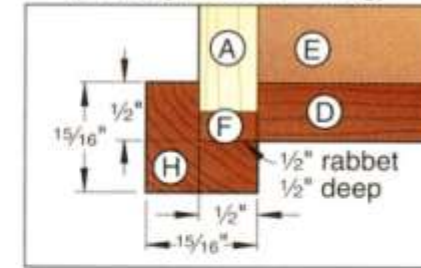


listed in the **Materials List**. Then, from 7/4" thick wengé planed to 1/2" thick, cut the bottom front rail (D) to size.

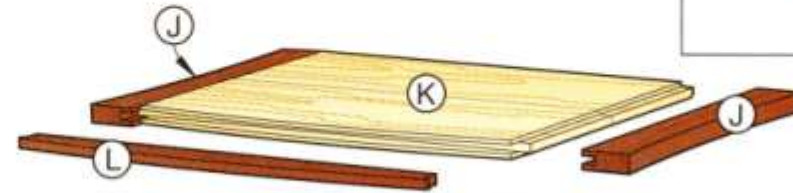
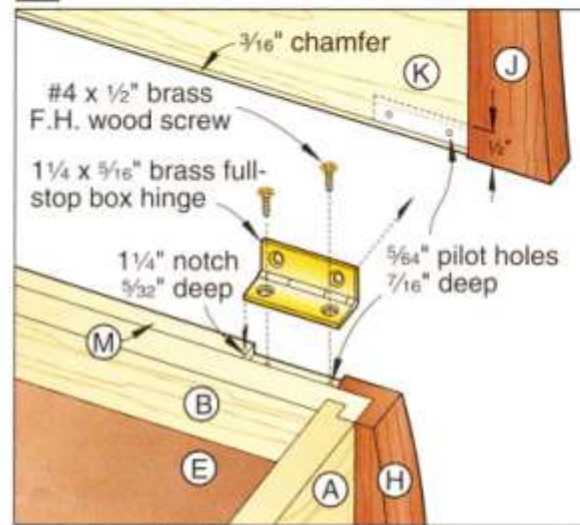
4 Using a standard 1/8"-kerf blade in your tablesaw, cut on the *inside* face of the

receive the bottom panel (E). Now cut the two inner 1/8" grooves 1/4" deep on the *inside* face of the sides only, where dimensioned on **Drawing 2**, to receive the 1/8" hardboard drawer runners (G), where shown on **Drawing 1**.

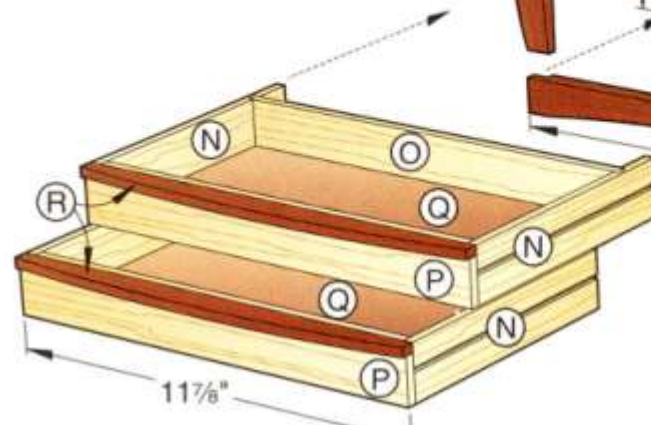
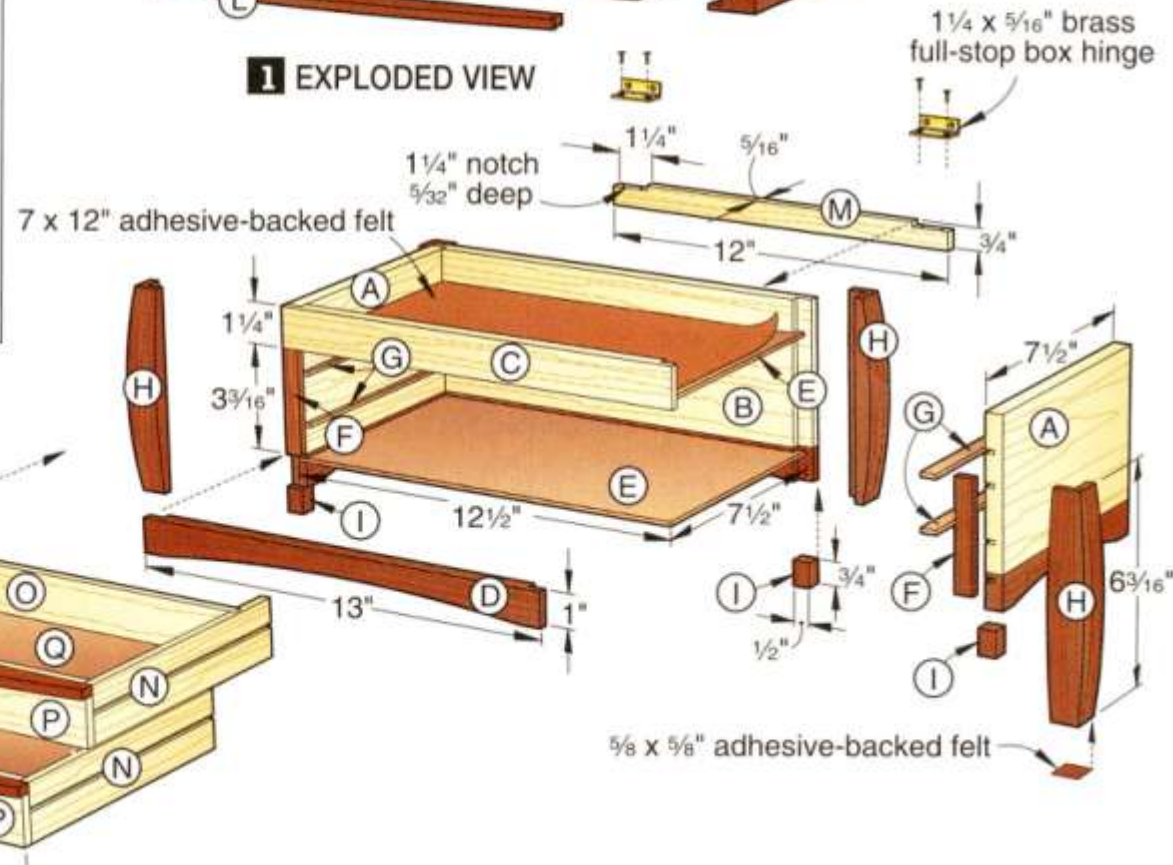
1a LEG DETAIL SECTION VIEW
(Through center of leg)



1b HINGE MOUNTING DETAIL

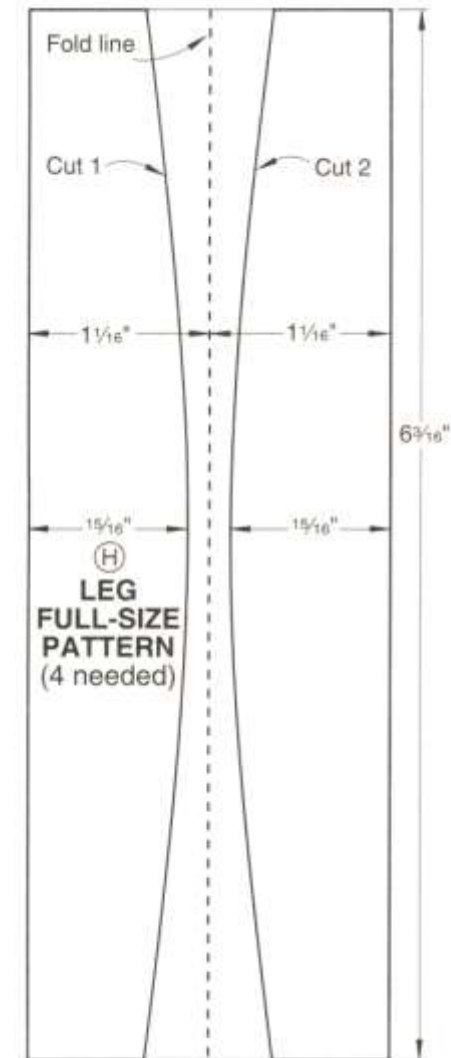


1 EXPLODED VIEW



CURVES

- Full size template for legs included in magazine
- Other curves marked out with bow
- Cut on bandsaw then template routed smooth



Jewelry Box
Page 64



PRECISION FITTING

- 10 cent pieces same thickness as nickels

SHOP TIP

Nickels serve as handy spacers

Using a ruler to check for $\frac{1}{16}$ " spacing between parts, such as the jewelry box drawers, can be cumbersome. Here's an easy way to establish uniform reveals without measuring. Simply place nickels, which measure a smidgen over $\frac{1}{16}$ " thick, between the parts to set the spacing, as shown.



Nickels evenly space parts, such as the jewelry box drawer-side cutoffs, about $\frac{1}{16}$ " apart.



HOW WAS THAT MADE?

Project 3 – End grain cutting board



END GRAIN CUTTING BOARD

- Followed instructions in video from the Wood Whisperer – on both his own site and Fine Woodworking. PDF plan also free to download.





7 - How to Make a Butcher Block End Grain Cutting Board...



Watch later



Share



MORE VIDEOS



0:13 / 17:38



YouTube



END GRAIN CUTTING BOARD

- Need precision in gluing
- Can glue in stages
- How to flatten?
 - strong warnings against using thicknesser
 - drum sander OK
 - router jig also OK – need wide router bit
- Cutting board oil or mineral oil as finish

