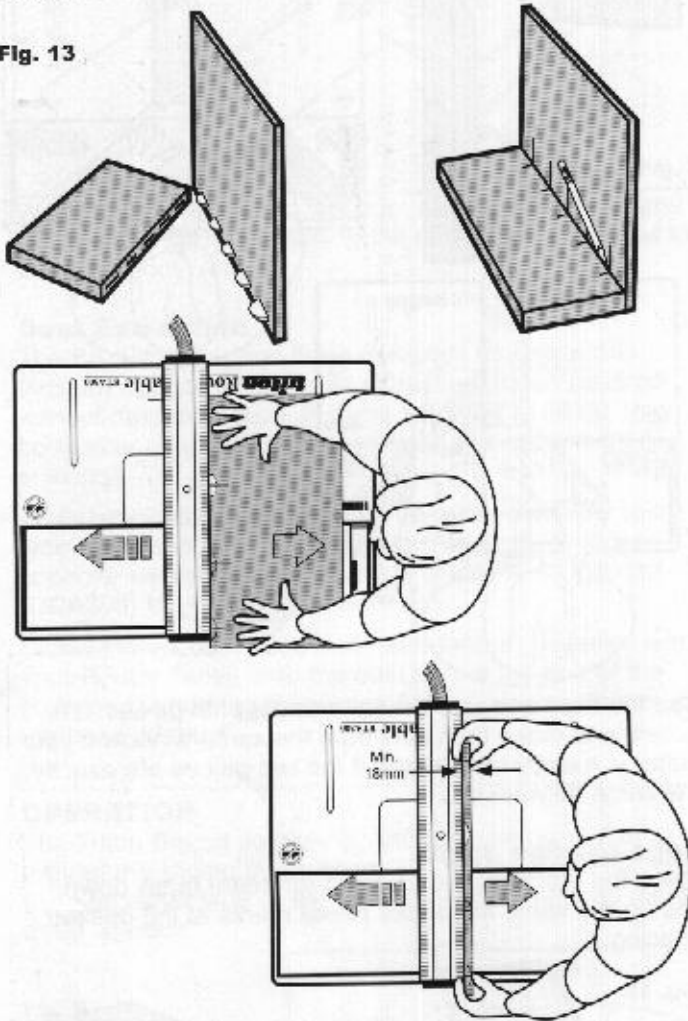


Edge-to-face Panel Joints

Mark the pieces and make the marks on the vertical piece about 50mm long, so that you'll be able to see them. Keep hands well clear of the cutter zone when cutting the vertical piece. The minimum thickness of material for this type of joint is 14mm, unless you are prepared to cut down your biscuits and adjust the limit stops for a shallower slot.

Fig. 13



Bevel Joints

Lay out and mark the pieces. Hold the pieces very carefully and steadily against the main body, with the bevel point sitting on the table. Keep hands well clear of the cutter zone, and try not to wobble the wood during the cut or you could create an over-sized slot.

Fig. 14

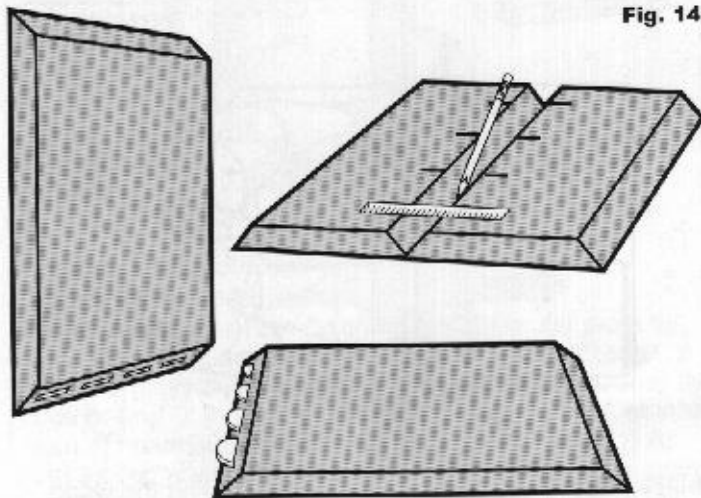
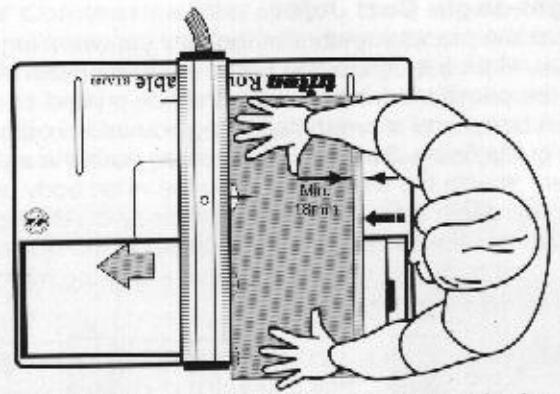
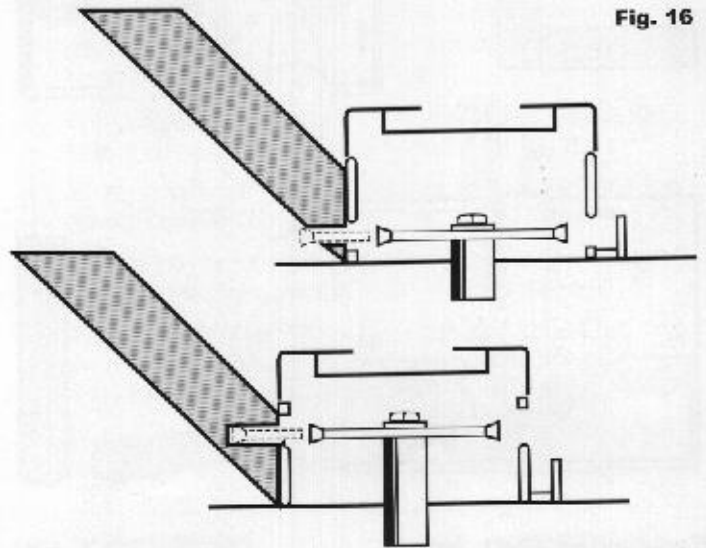


Fig. 15



The minimum thickness of material you can use for bevel jointing with unmodified biscuits is 18mm. The cutter will have to be raised above the centre-line of the bevel to avoid cutter break-out. (Fig. 16)

Fig. 16



Cutting Two-up

After you've had a bit of practice with the biscuit joiner you can cut pieces two at a time provided you use the sliding guide to support the workpieces. Preview the joint with the good (or seen) face up, then turn the pieces over, place them on either side of the main body without changing their orientation, and make two cuts while standing to the side of the table.

Fig. 17

